

# University of Connecticut Core-CT Modernization Project



# Core-CT Change Overview



Project completion is planned for late November 2024.



The appearance of Core-CT will change but current functionality will remain in place.



Some items have been moved and additional functionality has been added.



Upcoming project dates and important information will be shared on [ess.uconn.edu](https://ess.uconn.edu).



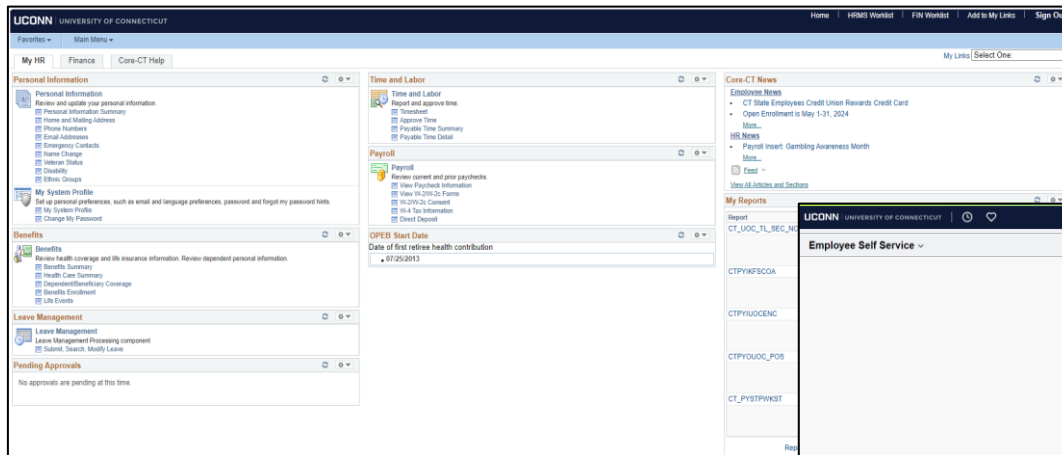
New Job Aids and training materials will be available to aid in the transition.



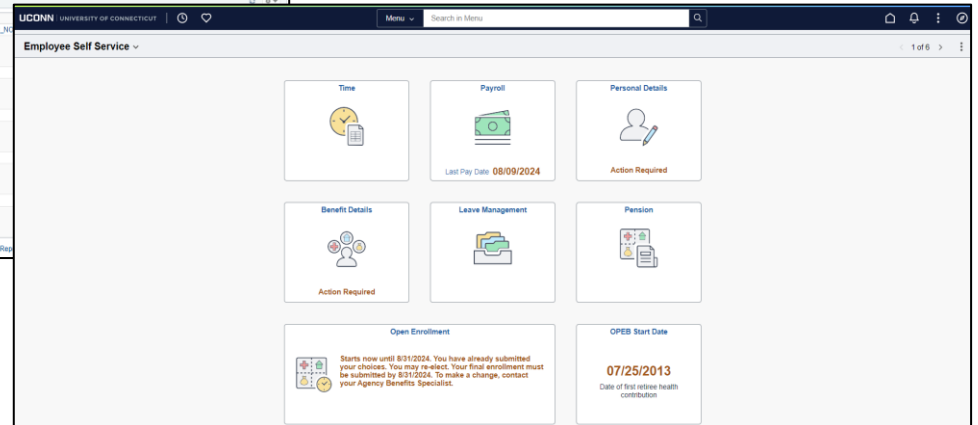
FAQ's and other documents will be available to assist users with questions surrounding system changes.

# Core-CT Home Page New Look

Current Home Page



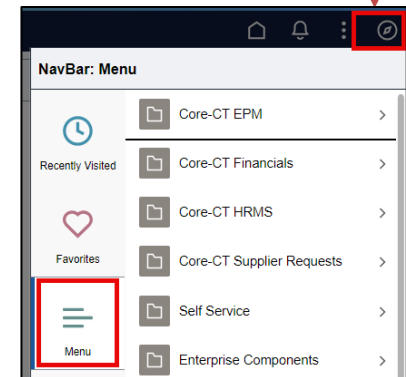
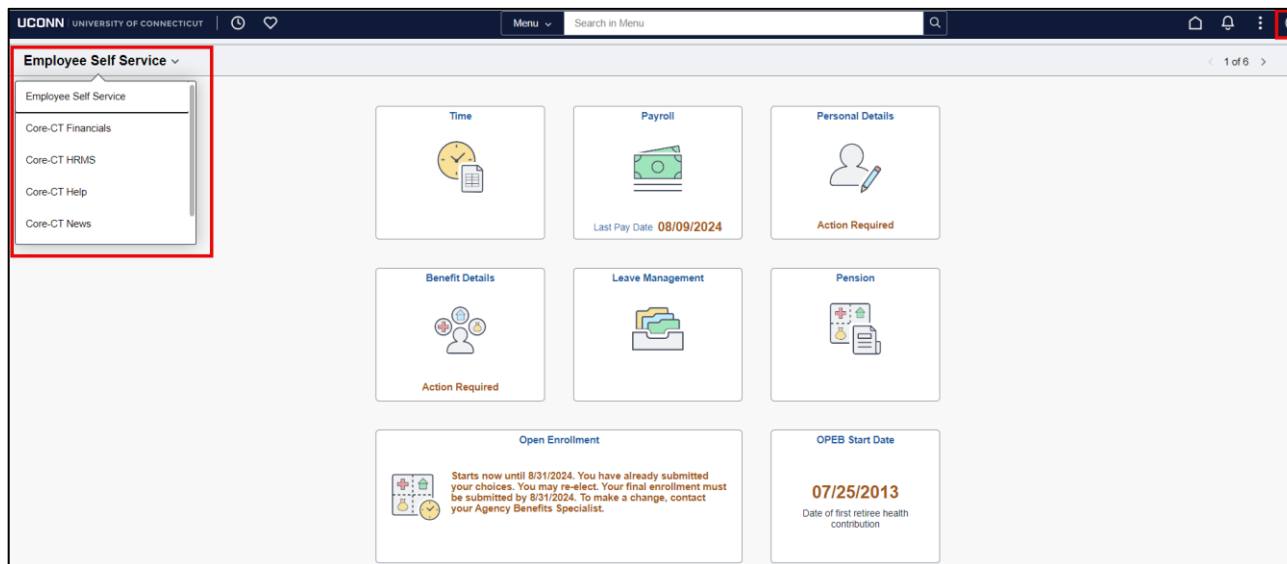
Future Home Page



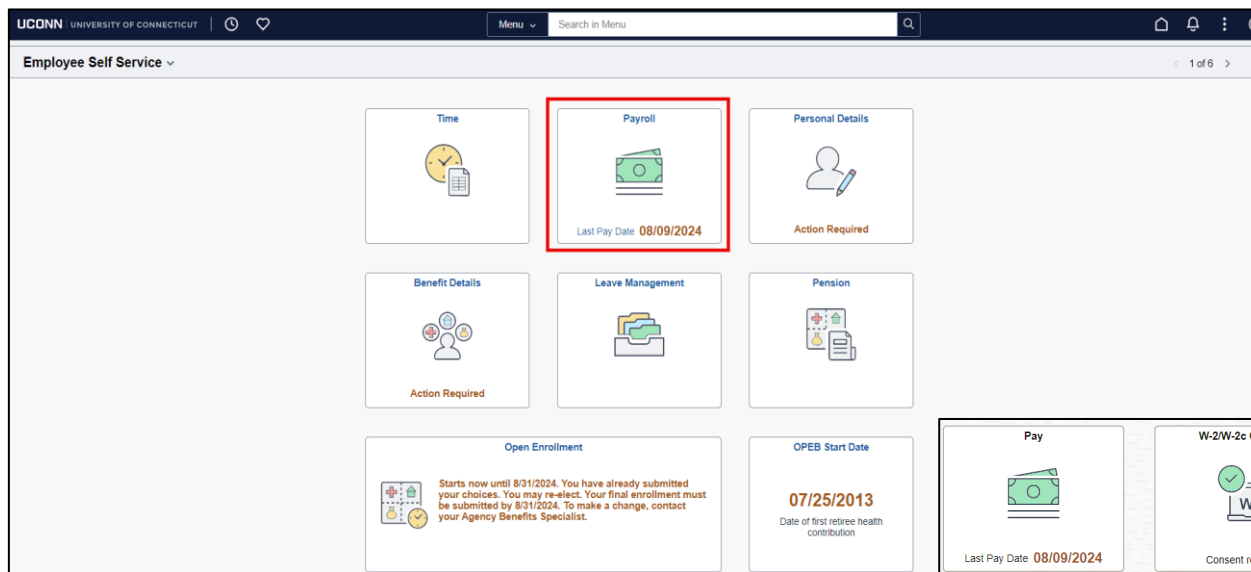
# Core-CT Navigation Options

Tile Navigation: Employee Self Service is the primary tile displayed. Some users may need to access other tiles. They may do so by using this option.

Nav Bar  
Some navigation items can be accessed by using the Nav Bar.

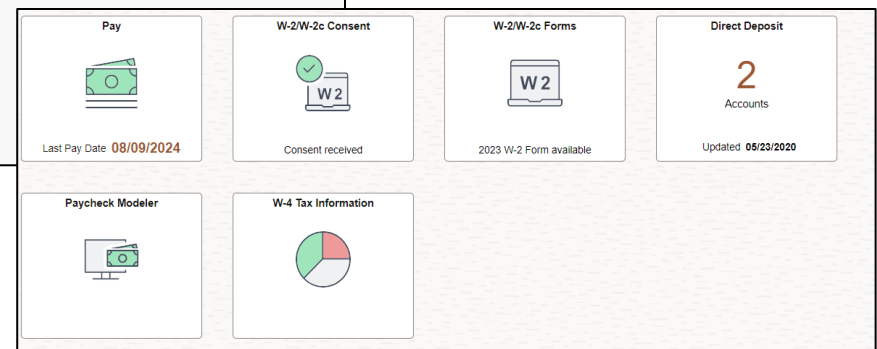


# Core-CT New Feature: Fluid Tiles



Tiles are a collection of frequently used pages. They have been designed to provide users with a convenient way to access popular items.

Within most tiles, additional navigation can be accessed.



# Core-CT Modernization Project

